

## Seizure/Epilepsy Certificate Program FAQs

Please use the chart below to determine which course is appropriate for your role.

Certificate Program Name/Designation Earned	Seizure and Epilepsy Healthcare Professional (6 Modules)	Seizure and Epilepsy Healthcare Professional in a Comprehensive Epilepsy Center (8 Modules)
<p><b>Content</b></p>	<ul style="list-style-type: none"> <li>• Module I—Anatomy, Physiology, and Etiology of Epilepsy</li> <li>• Module II—Seizures</li> <li>• Module III—Diagnosis and Assessment</li> <li>• Module IV—Treatment</li> <li>• Module V—Education and Self-Management</li> <li>• Module VI—Special Populations with Epilepsy</li> </ul>	<p><b>The core/original six modules listed to the left, plus two additional modules:</b></p> <ul style="list-style-type: none"> <li>• Module VII—Nursing Care in the Epilepsy Specialty Clinic</li> <li>• Module VIII—Nursing Care in the EMU</li> </ul>
<p><b>Target Audience (not limited only to nurses)</b></p>	<p>Healthcare professionals who:</p> <ul style="list-style-type: none"> <li>• Work with seizure/epilepsy patients but do not work in an NAEC accredited center</li> <li>• Do not work with seizure/epilepsy patients but are interested in furthering their knowledge on the topic</li> </ul>	<p>Healthcare professionals who:</p> <ul style="list-style-type: none"> <li>• Work in an NAEC accredited center. This will fulfill the NAEC accreditation requirement of nursing education.</li> <li>• Do not work in an NAEC center but are considering moving to one OR their hospital is in pursuit of NAEC accreditation.</li> </ul>
<p><b>Post-Assessment</b></p>	<p style="text-align: center;">50 Questions</p>	<p style="text-align: center;">70 Questions <i>(50 Questions from the 6-Module program + 20 Questions specific to the additional 2 modules)</i></p>
<p><b>Pricing</b></p>	<p><b>AANN members:</b> \$250 <b>Non-Members:</b> \$400</p>	<p><b>AANN members:</b> \$300 <b>Non-Members:</b> \$450</p>
<p><b>Renewal</b></p>	<p>3 years</p>	<p>3 years</p>



### **Are there eligibility requirements?**

There are no eligibility requirements to participate in the program, however, the target audience for this course are nurses who have an interest and understanding of seizures and epilepsy basics or involved in the care of people with Epilepsy and Seizure Disorders. It provides a comprehensive curriculum and builds on a foundation of seizure disorder and epilepsy knowledge, with the learner earning a certificate of added qualification upon successful completion. See information in the chart between the 6-module course and 8-module course to determine which course is most appropriate to your role.

### **Where can I get the outlines for each module?**

The full content outline for the program is listed in the [Candidate Handbook](#) on the AANN and ABNN websites.

### **How long do I have access to complete the certificate program?**

Users will have **6 months** to access and complete the Seizure/Epilepsy Certificate Program from their purchase date. If you do not complete the course within the 6-month timeframe, you will no longer have access to the course and will need to re-purchase and complete the program again to earn your certificate of added qualification.

### **How long is each of the modules?**

Modules range from as little as 30 minutes and up to 90 minutes.

### **Are there handouts for the modules?**

Yes, users can download PDF handouts of the modules in the “Resources” section of the program in the LMS once it is purchased.

### **What are the Knowledge Checks?**

Knowledge checks are 5 multiple choice questions at the end of each module. These questions are not scored and are not counted towards your pass/fail status of the program.

### **What is the passing score on the Post-Assessment?**

Users will need to score 80% or higher in order to pass the program, earn CE, and earn the ABNN certificate of added qualification.

### **Will I be able to see which questions I answered incorrectly after completing each Post-Assessment attempt?**

Yes, users will be able to see which questions they answered incorrectly once they submit their post-assessment, however, users will not be able to see the correct answer for those items and will instead be directed to which Module that question is related to.

### **What if I do not pass the Post-Assessment?**

Users will have **3 attempts** to pass the Post-Assessment. If you do not pass the Post-Assessment on your 3<sup>rd</sup> attempt, you will still have access to the course for the 6-month timeframe, however, you will need to re-purchase the program if you would like to attempt the post-assessment again.

### **How many CE credits can you earn from completing the certificate program?**

Participants who complete the 6-module program and pass the post-assessment will earn **6 CE contact hours** and a certificate of completion from AANN upon completion of the program.\*

Participants who complete the 8-module program and pass all assessments will earn **11 CE contact hours** and a certificate of completion from AANN upon completion of the program.\*

*\*The American Association of Neuroscience Nurses (AANN) is accredited as a provider of nursing continuing professional development by the American Nurses Credentialing Center's Commission on Accreditation in Nursing Continuing Professional Development. The American Association of Neuroscience Nurses is accredited as a provider of continuing education by the California Board of Registered Nursing (CEP:13331)*

### **Where can I access the CE certificate and ABNN Certificate of Added Qualification once I pass the Post-Assessment?**

Users will need to complete the overall program evaluation after passing the Post-Assessment. Once that is completed, user can find the AANN CE certificate under the "Completed Courses" section under the "My Learning" tab of the LMS. The ABNN Certificate of Added Qualification will be emailed to those who passed approximately 4 weeks after they pass.

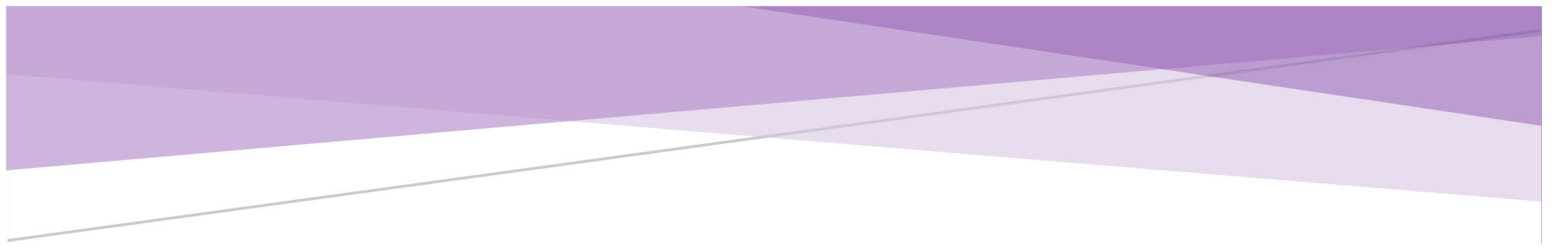
### **What is the renewal process?**

The Certificate for the Seizure and Epilepsy Healthcare Professional must be renewed every three (3) years to ensure that your epilepsy knowledge stays current, and you are continuing to progress as an experienced epilepsy healthcare professional. The renewal course will be offered on demand followed by post-assessments. The course must be successfully completed by December 31st of your third (3rd) year (i.e., users who pass the course in 2021 will be due to renew by December 31, 2024).

AANN and ABNN will provide reminder information in the middle of the year that the candidate is due to recertify, however, it is ultimately the responsibility of the candidate to complete the renewal process. The renewal course will not be available until June of your third (3rd) year.

### **Is this program recognized by accreditation bodies?**

The 8-module Certificate Program is recognized by the [National Association of Epilepsy Centers \(NAEC\)](#), the only entity that accredits epilepsy centers based on a defined set of standards in order to improve patient care. Completion of the 8-module program will meet the accreditation requirement for nursing expertise in epilepsy.



### Do you offer institutional pricing?

Institutions are eligible for a discount when you purchase 10 or more subscriptions to the Seizure/Epilepsy Certificate Program. Purchases of 10 or more will receive a 10% discount off member rate of \$250.00 for the Core 6 modules and \$300.00 for the Core 6 Modules + 2 NAEC Unit Modules. Please contact [info@aann.org](mailto:info@aann.org) if you would like to learn more about institutional pricing.

Number of Subscriptions	% Discount	Price per participant (6 module course)	Price per participant (8 module course)
10-20	10% off member price	\$225.00	\$270.00